

# Company introduction

**Dongguan Hanjun Plastic Product Co.,Ltd** is a global company supplying many industries with power transmission and conveying components. The product offering ranges from roller chains, couplings and geared products to conveyor chains, belts and components. The **Hanjun FlatTop** division is manufacturing conveyor chains, belts and components.

**Hanjun** chains and belts are being used to convey a wide variety of products: bottles, cans, boxes, crates, tires, loose food, glass jars, PET containers, trays; shortly every transport in production halls in virtually any industry.





■ As the handling specialist in the field of conveying, the **Hanjun** product portfolio is providing solutions for complete lines in several industries in order to improve productivity.

■ In beverage industry palletizers, depalletizers, washers, labelers, fillers, pasteurizers, inliners, outfeeds, elevators and accumulation tables are equipped with slatband chains, curves, sprockets, belts, bearings, leveling elements and many more conveyor components.

■ For the container manufacturing industry special products and materials are available, such as abrasion resistant polyamide for glass plants, vacuum chains for can making and gripper chains for vertical transport.

■ A wide range of products is also offered for blanchers, cookers, washers, coolers and processing lines in fruit, vegetables, bakery, confectionary etc. And many more products are available for the handling of packed food.

■ In automotive industry the products are engineered to meet the most demanding applications, such as rubber processing and tire handling.

■ This is just a short selection of the applications in which **Hanjun** products are being used. Among others they have also found their way into pharmaceutical production lines, battery manufacture, paper and cardboard production.





# Dongguan Hanjun Plastic Product Co.,Ltd





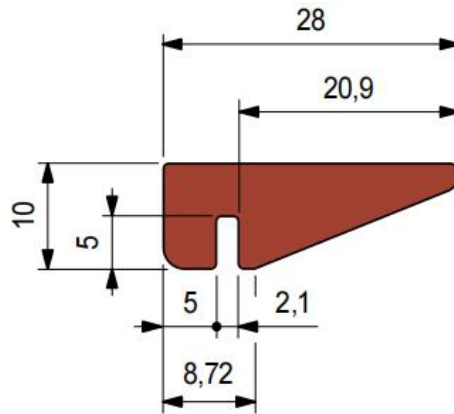
## Chain guide profiles

**Material:** Polyethylene PE—This is the plastic material which is most suited to the manufacture of lateral guides subject to sliding control, thanks to an extremely low coefficient of friction, excellent wear resistance and zero absorption (important in water lubricated applications).

PE polyethylene also offers high resistance to chemical attack and good sound absorbing qualities .

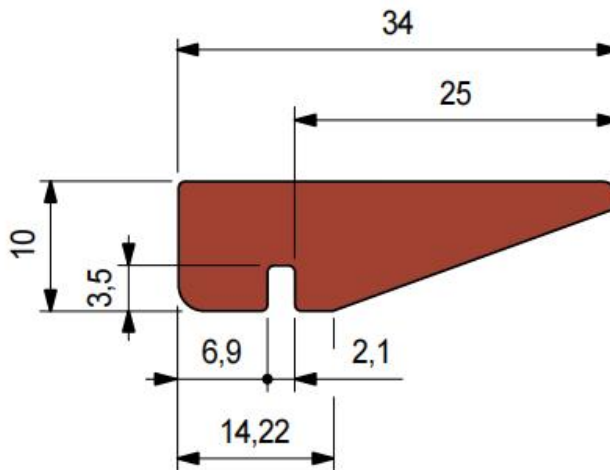
Inflammability: 94HB.

## H594 Neck transport guides



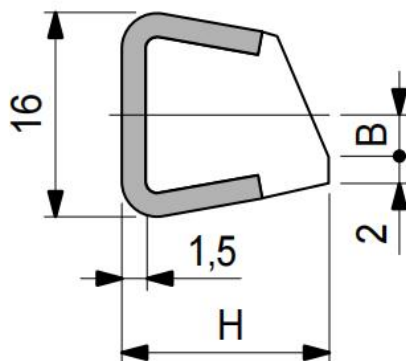
**Material:** Polyethylene UHMWPE  
**Color :** green and brown red and so on  
**Package:** 20m//roll or 50 m/roll

## H654 Neck transport guides



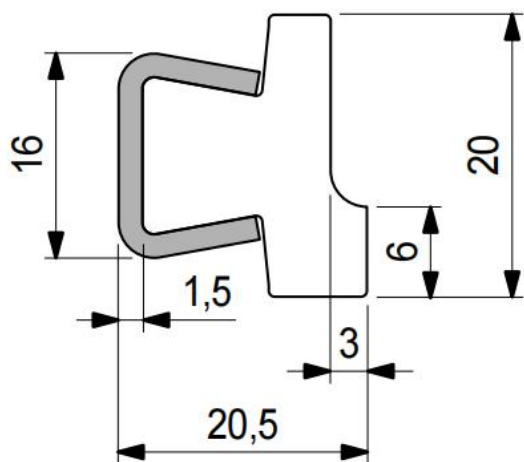
**Material:** Polyethylene UHMWPE  
**Color :** green and brown red and so on  
**Package:** 20m//roll or 50 m/roll

## H393 Label protection guide



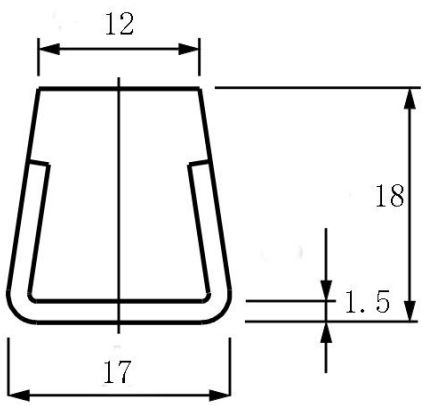
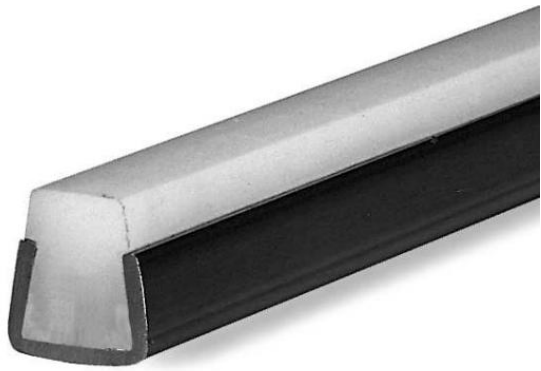
H	B
mm	mm
15	3,9
17	3,6

# H596 Label protection guide



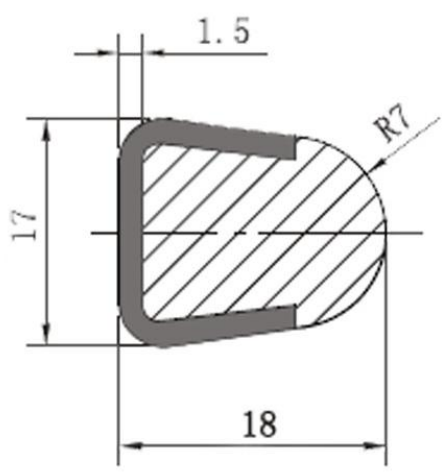
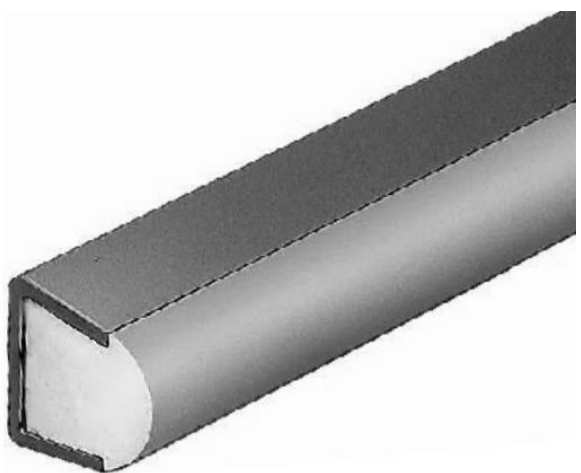
---

# H223 Neck transport guide

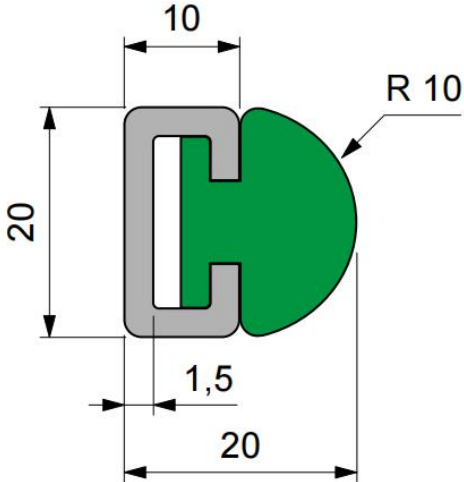


---

# H219 Guide rail (round)

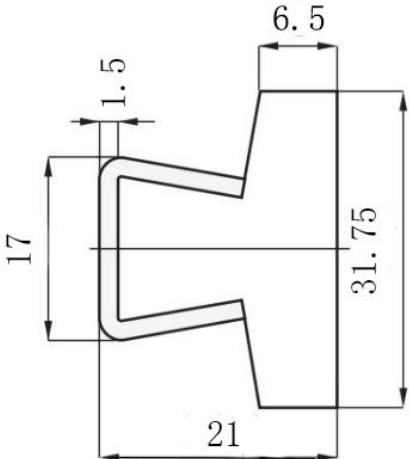


### H247 Guide rail (round)



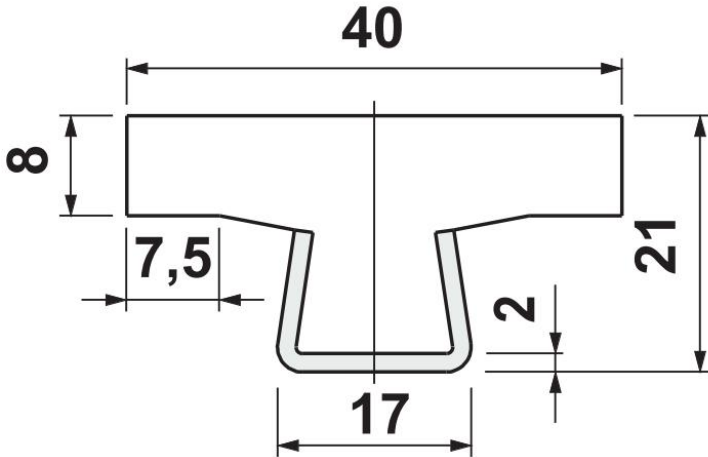
---

### H273 Guide rail (extra-flat)

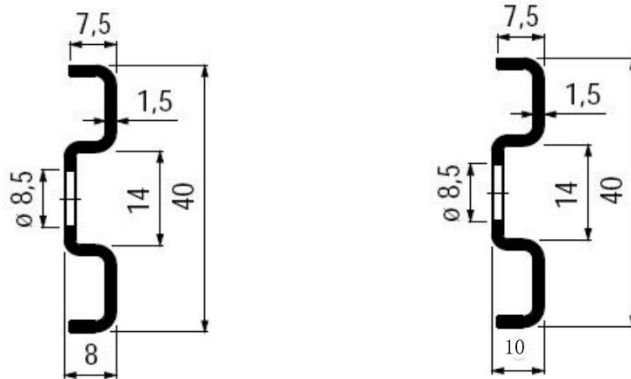
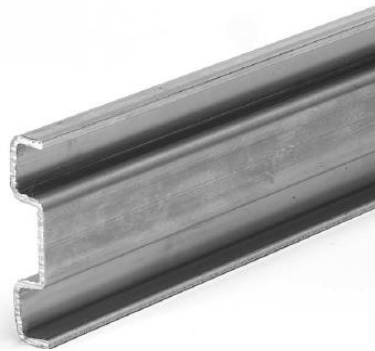


---

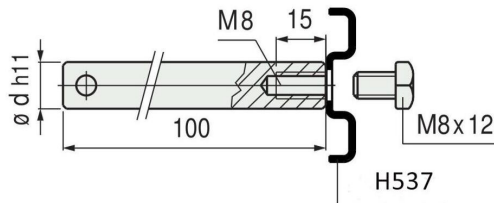
### H356 Guide rail (extra-flat)



## H537 Metal profile

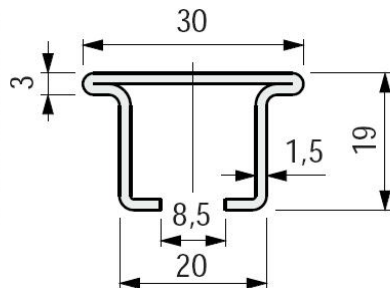
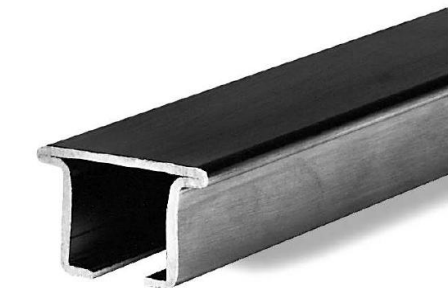


## H535 Bolts set



Code Number	Pin Dia.(d)mm	Material
H535	12	Stainless Steel
	14	

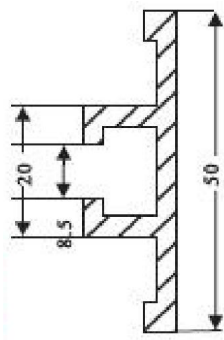
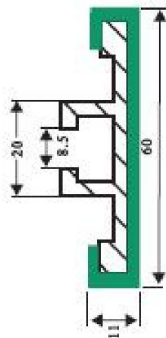
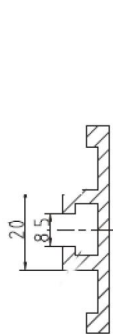
## H368 Chain guide profile



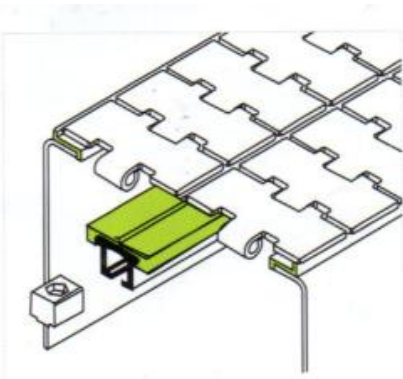
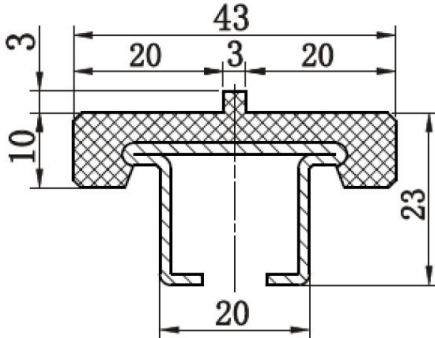
Code Number	Length	Weight	Material
	Meters	Kd/m	
H368	3	0.9	Stainless steel
	6		



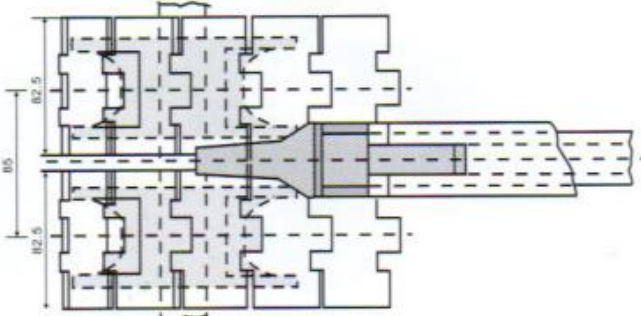
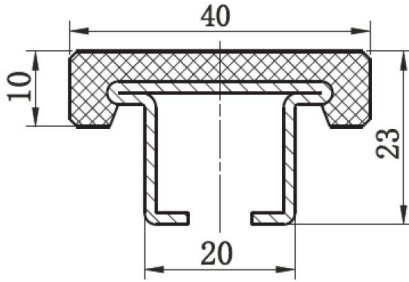
# H538-2 E Type Plastic and aluminium Chain Guide profile



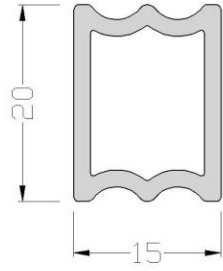
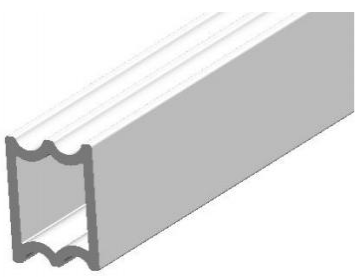
# H366 Plastic Chain Guide profile



# H367 Plastic Chain Guide profile



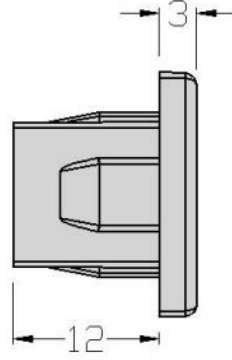
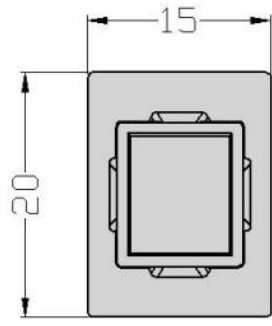
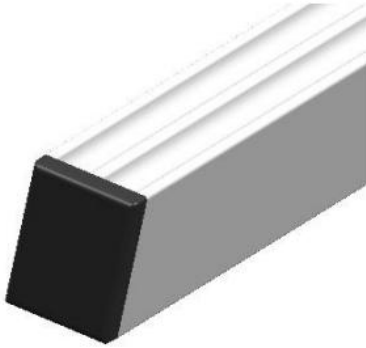
# H 15 Aluminum Side Guides



**Pack: 3m/pcs**

---

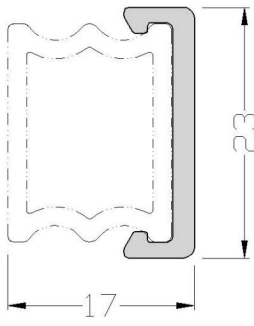
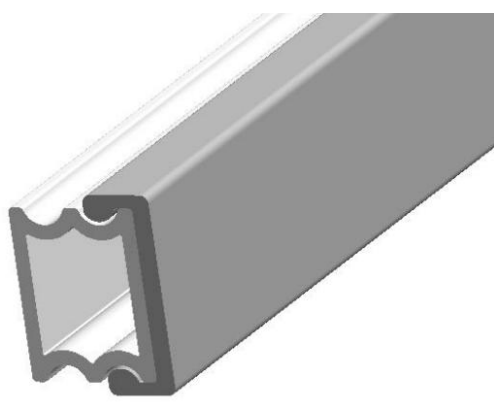
# H 23 The end plug



**Material :Black PA**

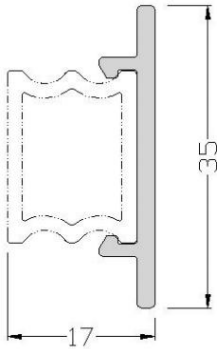
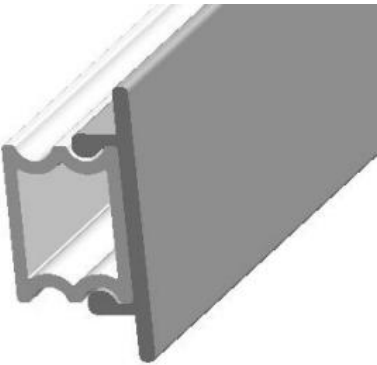
---

# H23 Protecting Bush



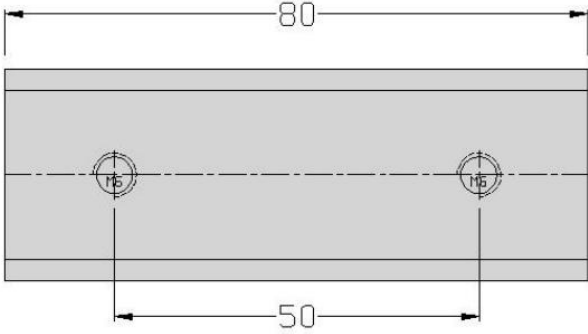
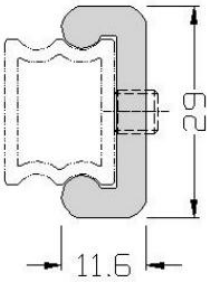
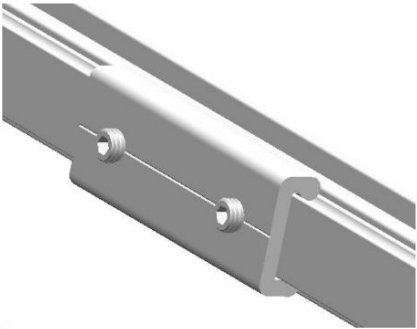
**Material:PE; Pack: 3m/pcs;White;Color can custom**

# H35 Protecting Bush



**Material:PE; Pack: 3m/pcs;White;Color can custom**

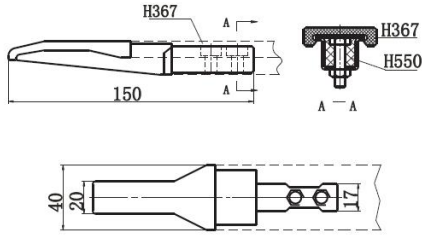
# H 80 Sonnect Sockets



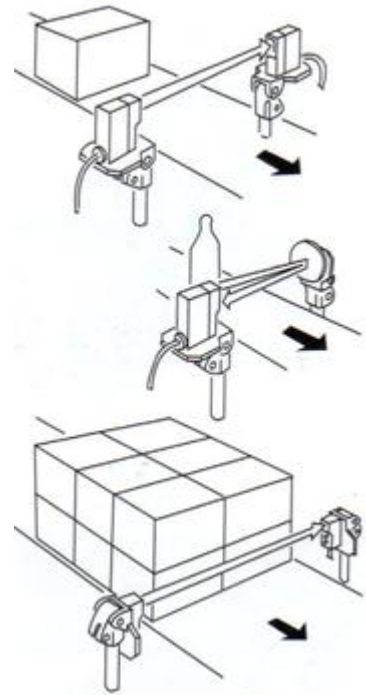
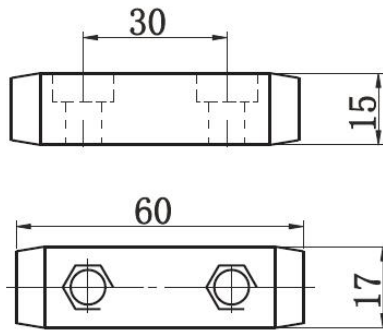
**Material :Aluminum**



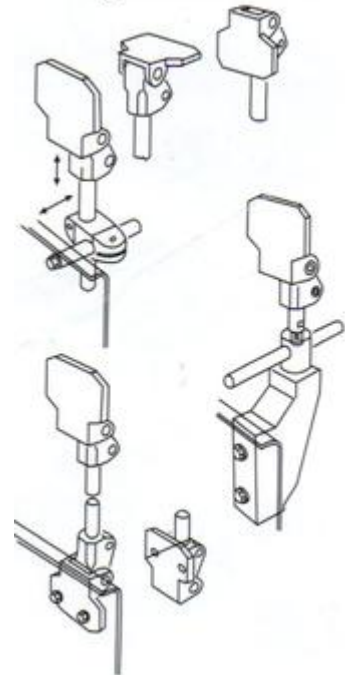
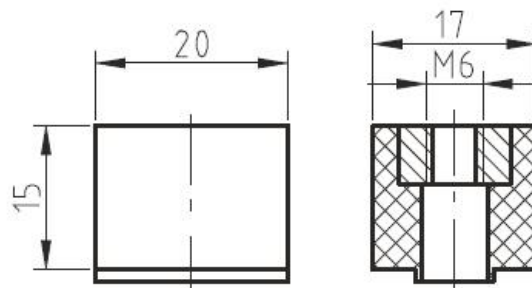
# H550 Plastic Chain Inlet Guide Shoe



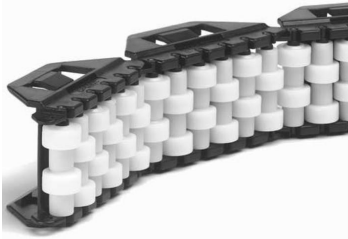
# H552 Connecting Block for



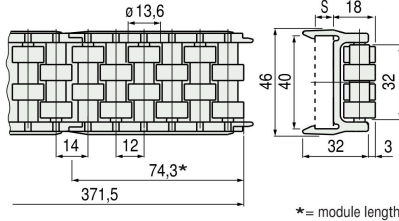
# H371 Mounting Block for



# H580-32 Roller Side Guide

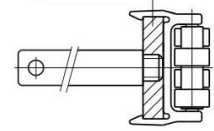


Sideflexing



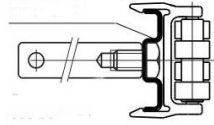
- Fixing with plate.

$\square$  40 x 8  
 $\square$  40 x 10

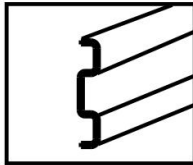


- Fixing with metal profile Part. 537.

Part. 537 (40 x 8)

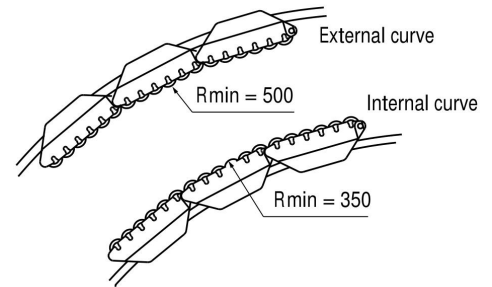


**Material: frame in acetal  
POM(black).Rollers in polyamide  
PA(white)  
Standard packing :4.5 meters(N<sup>o</sup> 12  
modules ) .  
Accessories:**

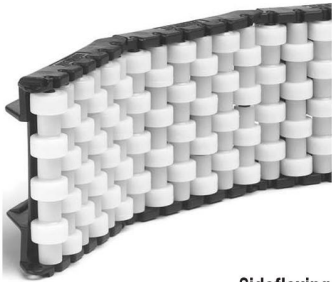


**Part:H537---Metal  
profile 40x 8**

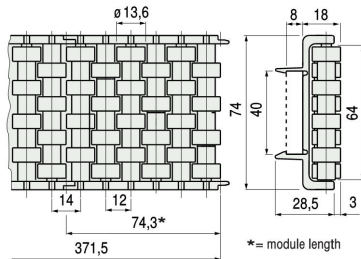
## Min.curvature radius H580



# H580-64 Roller Side Guide

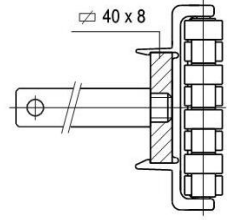


Sideflexing



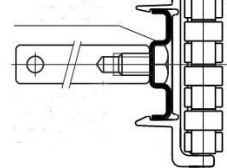
- Fixing with plate.

$\square$  40 x 8

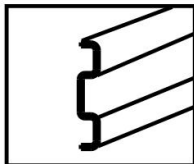


- Fixing with metal  
profile Part. 537.

Part. 537 (40 x 8)

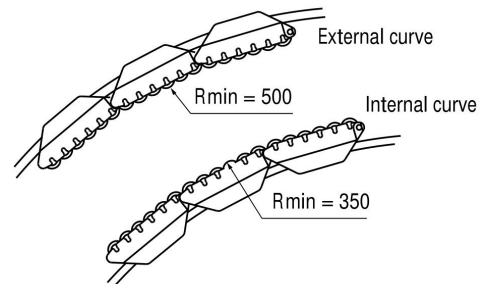


**Material: frame in acetal  
POM(black).Rollers in polyamide  
PA(white)  
Standard packing :4.5 meters(N<sup>o</sup> 12  
modules ) .  
Accessories:**



**Part:H537---Metal  
profile 40x 8**

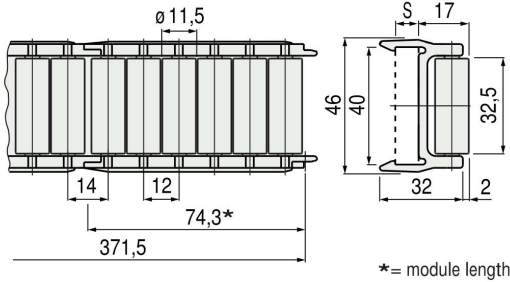
## Min.curvature radius H580



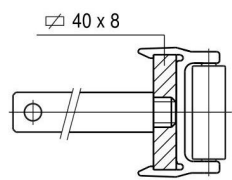
# H581-32 .5 Roller Side Guide



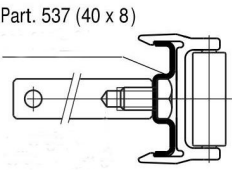
Sideflexing



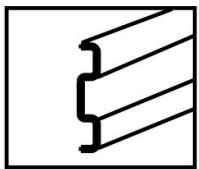
- Fixing with plate.



- Fixing with metal profile Part. 537.

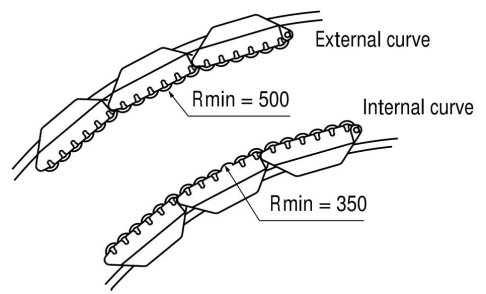


**Material:** frame in acetal  
**POM(black).Rollers in polyamide  
 PA(white)**  
**Standard packing :4.5 meters(N<sup>o</sup> 12  
 modules ) .**  
**Accessories:**



**Part:H537---Metal  
 profile 40x 8**

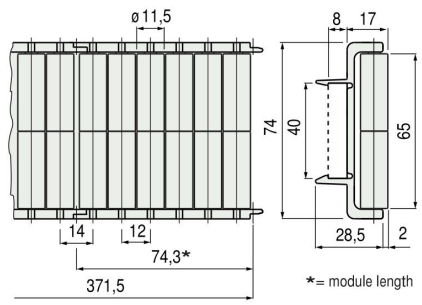
## Min.curvature radius H581



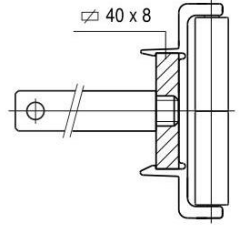
# H581-65 Roller Side Guide



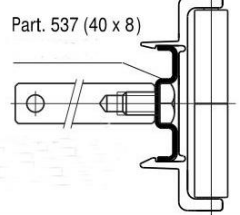
Sideflexing



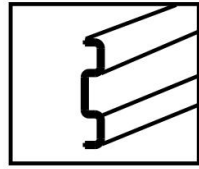
- Fixing with plate.



- Fixing with metal  
 profile Part. 537.

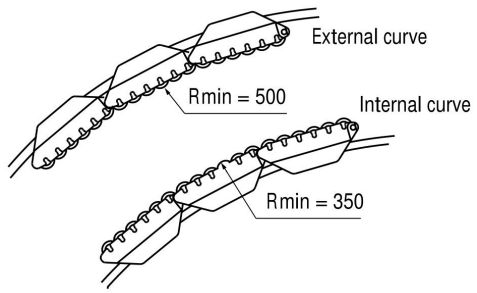


**Material:** frame in acetal  
**POM(black).Rollers in polyamide  
 PA(white)**  
**Standard packing :4.5 meters(N<sup>o</sup> 12  
 modules ) .**  
**Accessories:**



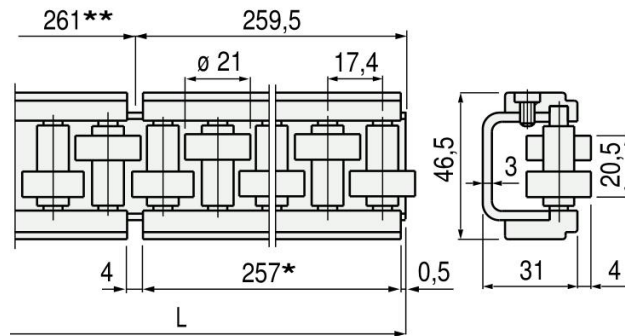
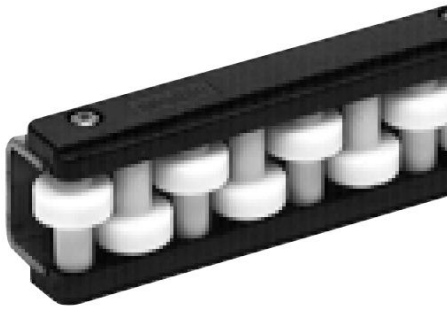
**Part:H537---Metal  
 profile 40x 8**

## Min.curvature radius H581



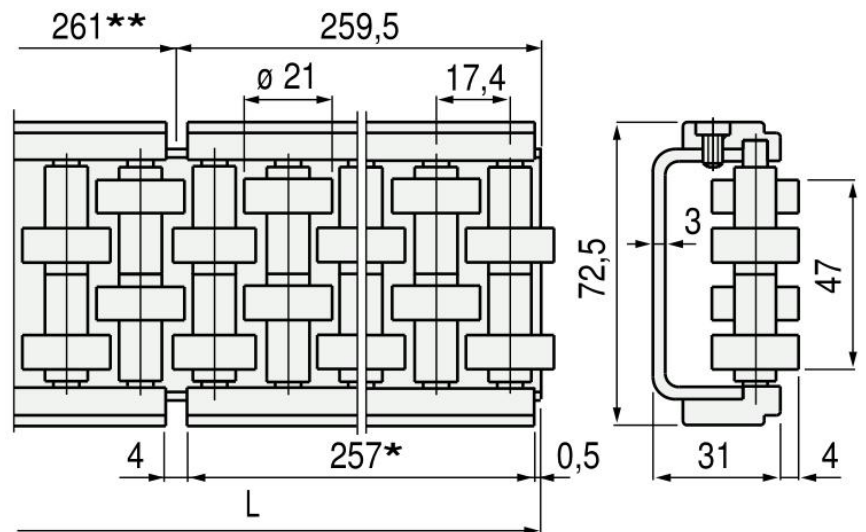


## H128-47 U1 Straight Run Roller Side Guide



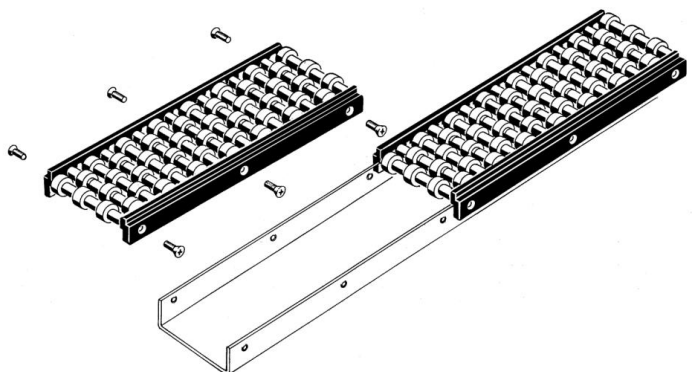
**Material: frame in stainless steel .Rollers in Polyformaldehyde POM(white)**  
**Standard packing :1 meter/ pcs**

## H128-73 U2 Straight Run Roller Side Guide

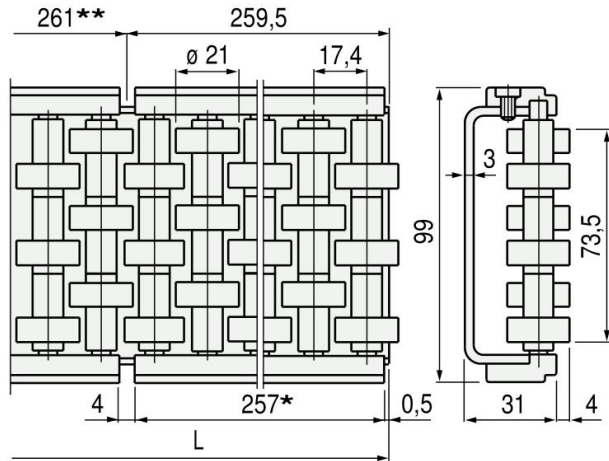


**Material: frame in stainless steel .Rollers in Polyformaldehyde POM(white)**  
**Standard packing :1.0 meter /pcs**

**Guides are made of 257mm long modules fixed on a metal "C" Profile**

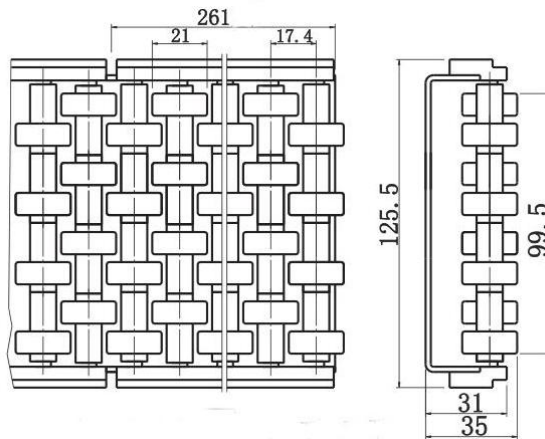


# H128-99 U3 Straight Run Roller Side Guide

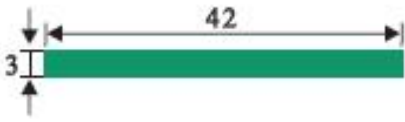
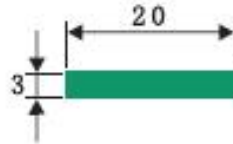
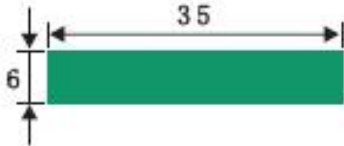
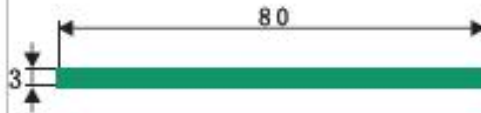
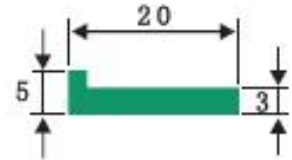
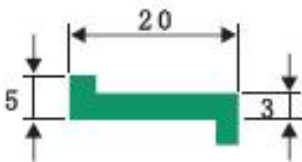
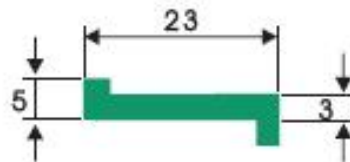
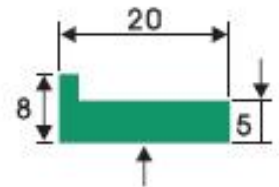
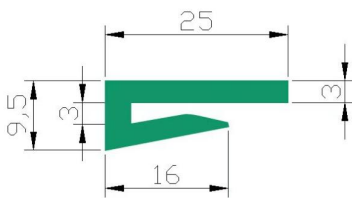
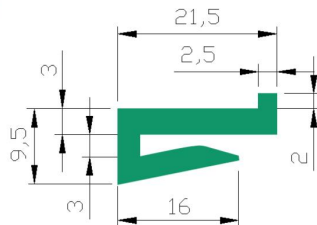
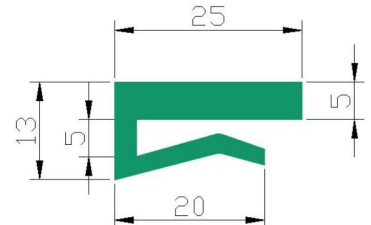
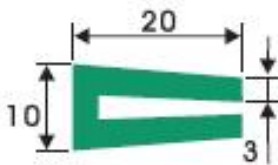
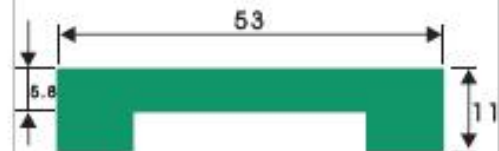
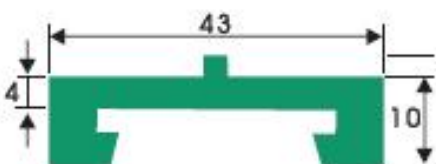
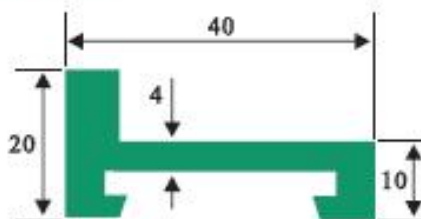


**Material: frame in stainless steel .Rollers in Polyformaldehyde POM(white)**  
**Standard packing :1 meter/ pcs**

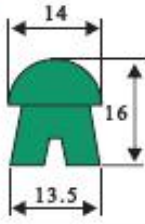
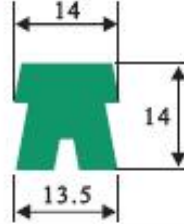
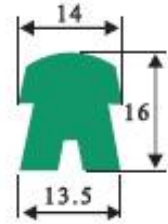
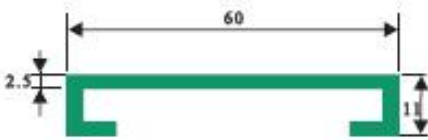
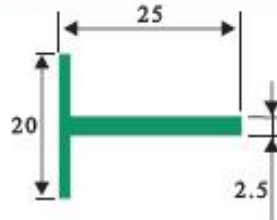
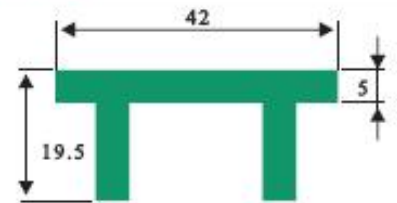
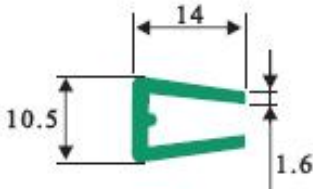
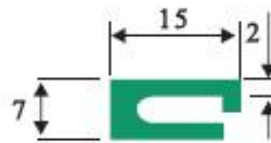
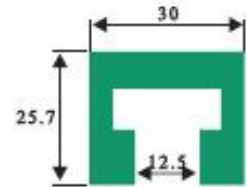
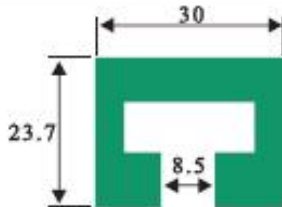
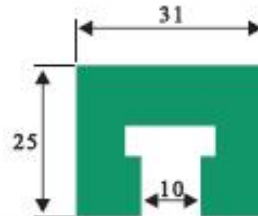
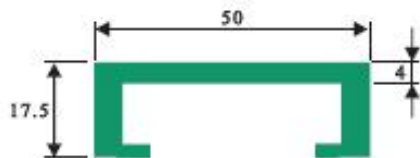
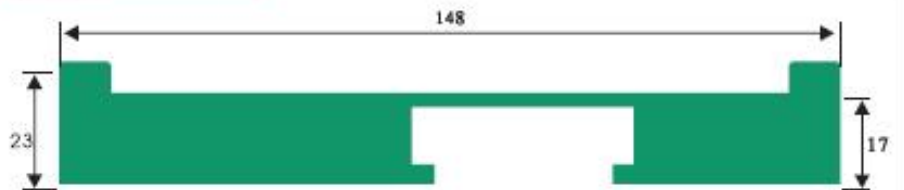
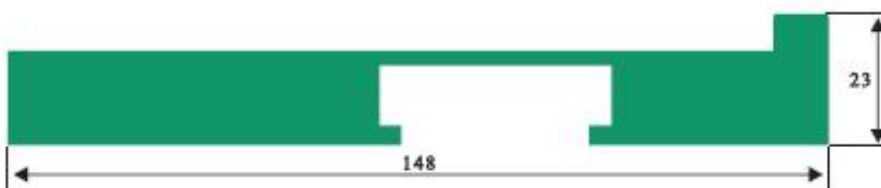
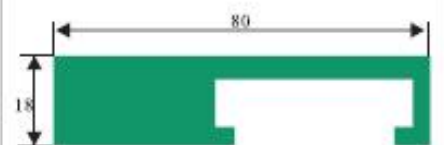
# H128-125 U4 Straight Run Roller Side Guide

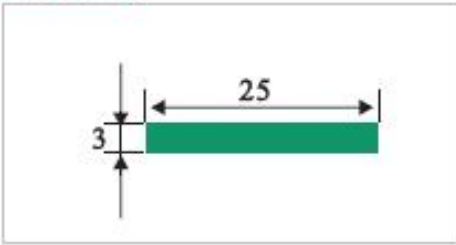
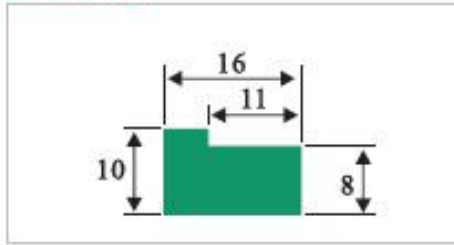
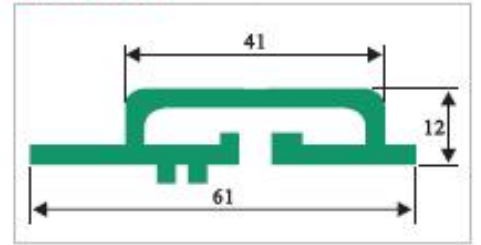
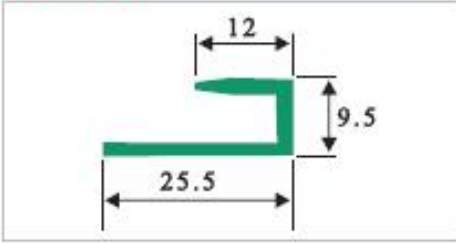
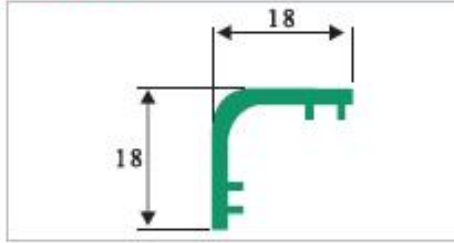
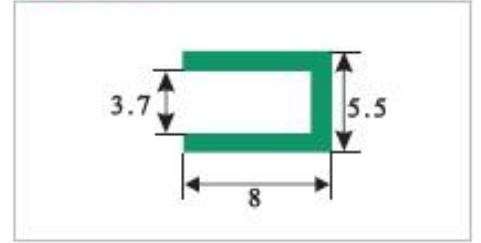
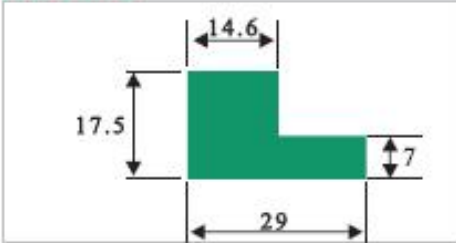
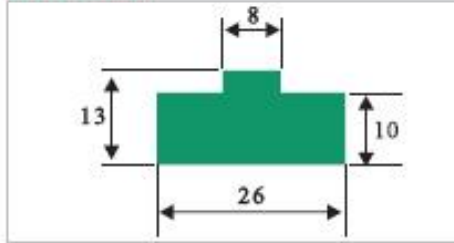
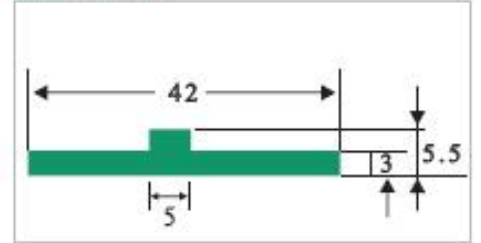
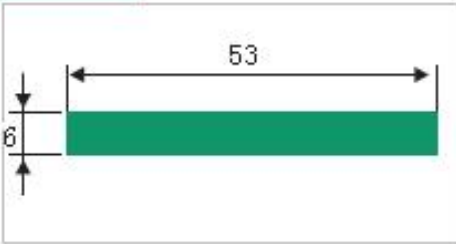
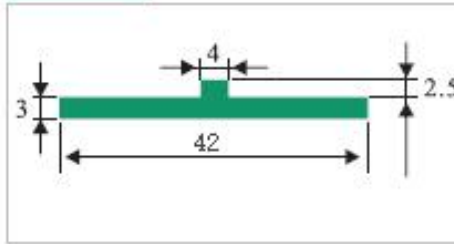
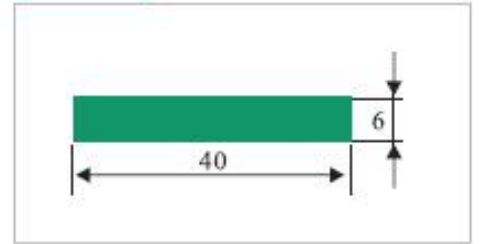
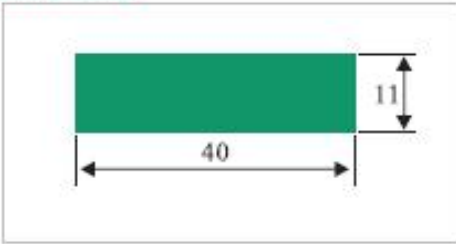
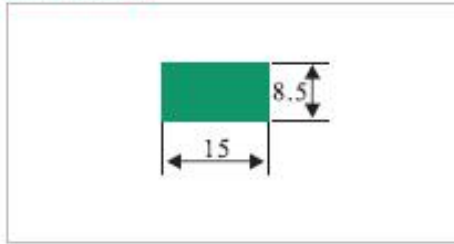
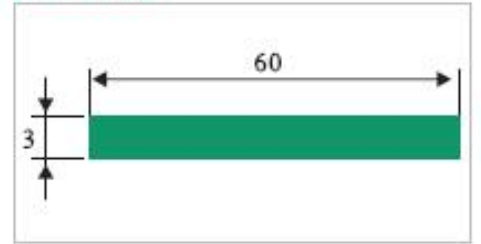
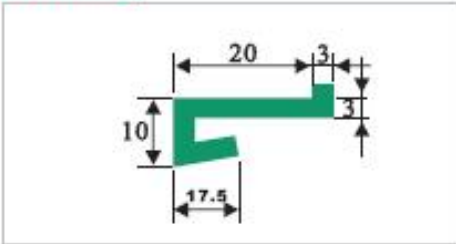
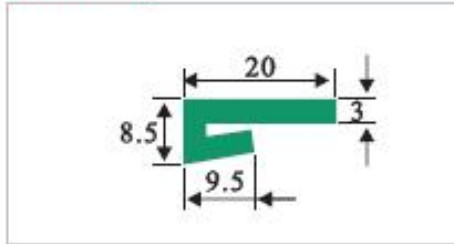
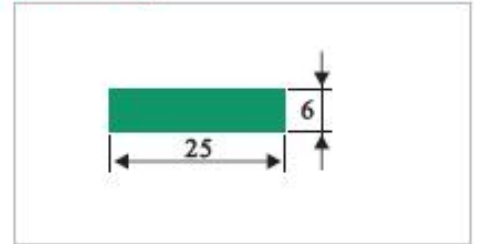


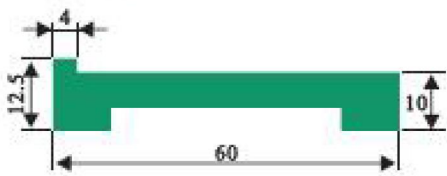
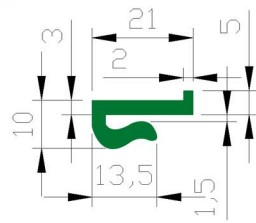
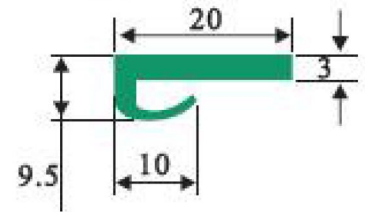
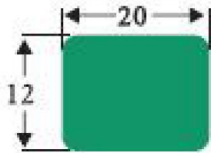
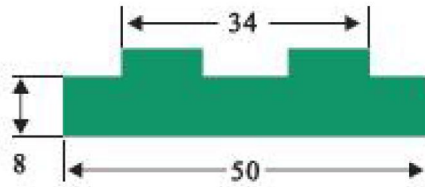
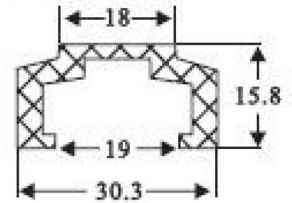
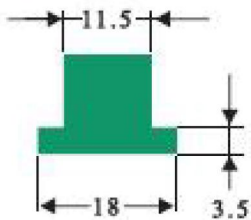
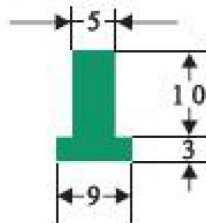
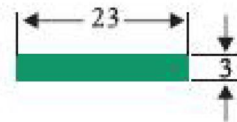
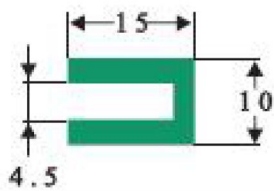
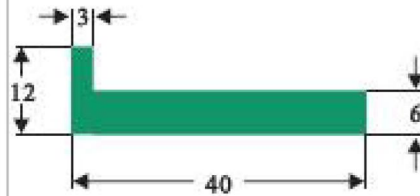
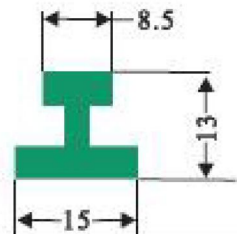
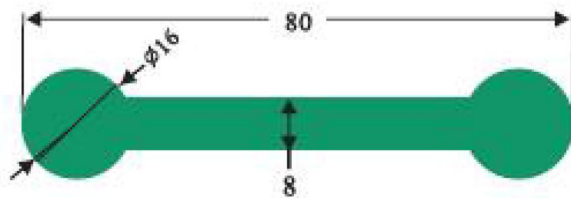
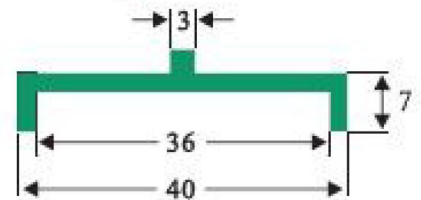
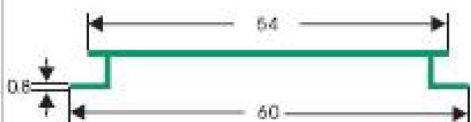
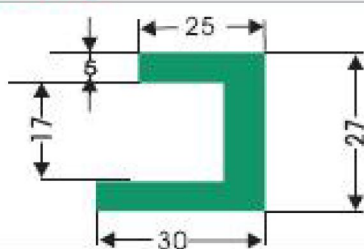
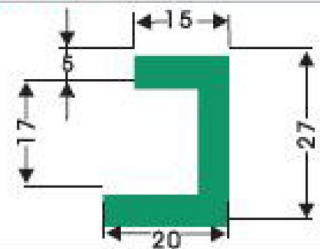
**Material: frame in stainless steel .Rollers in Polyformaldehyde POM(white)**  
**Standard packing :1.0 meter /pcs**

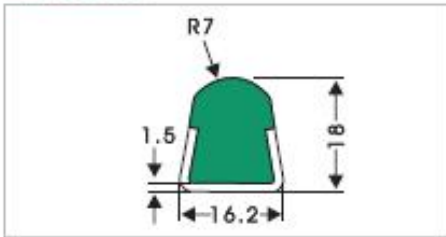
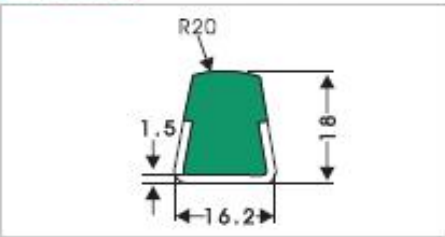
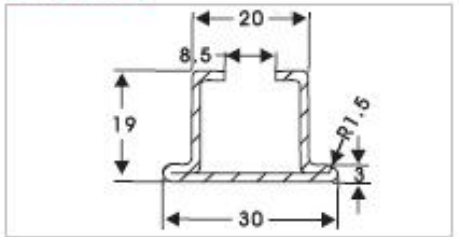
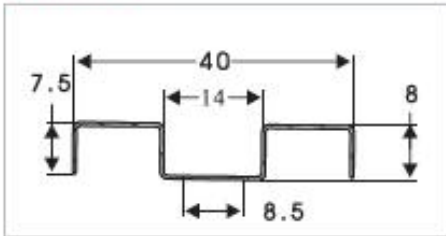
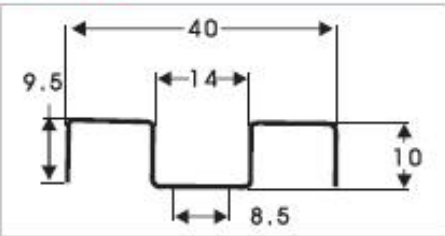
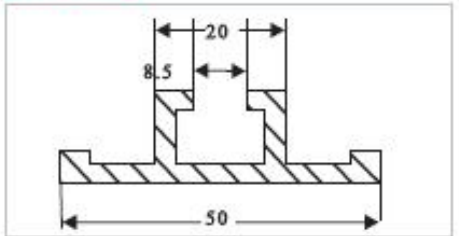
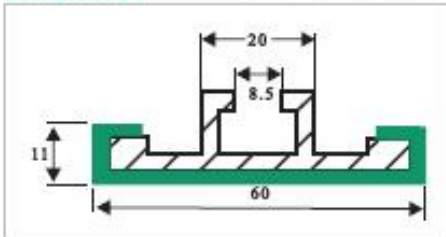
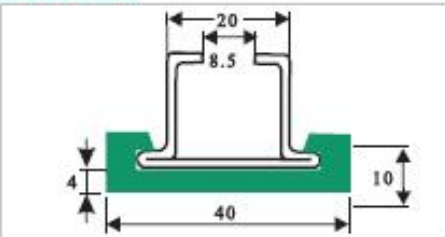
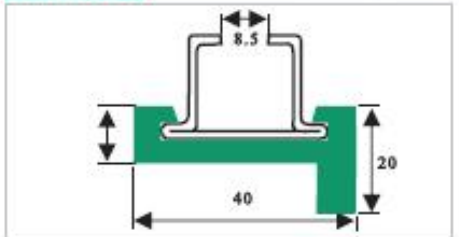
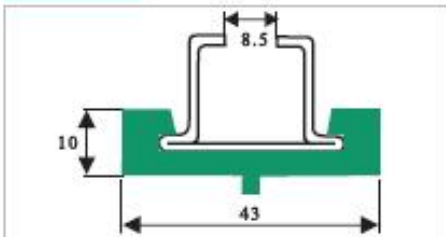
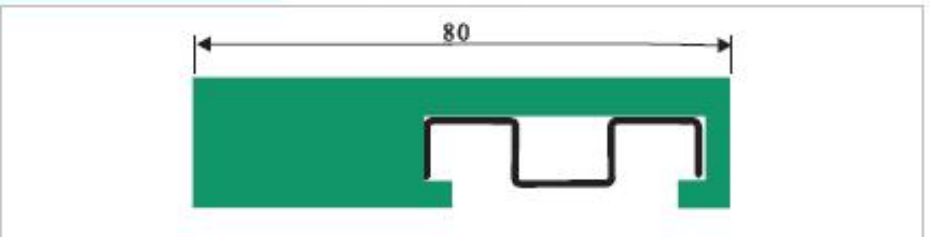
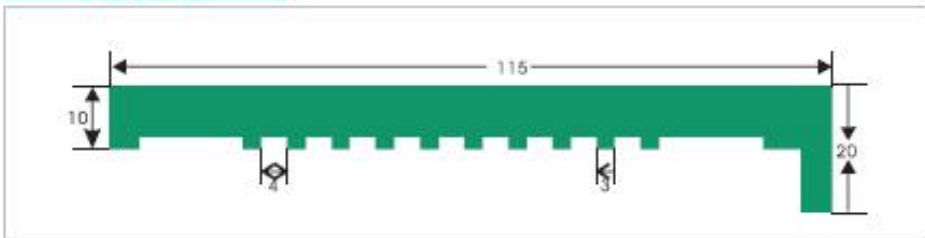
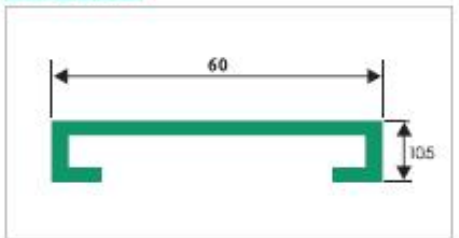
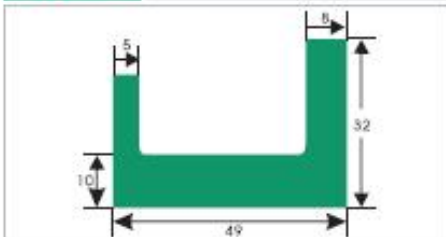
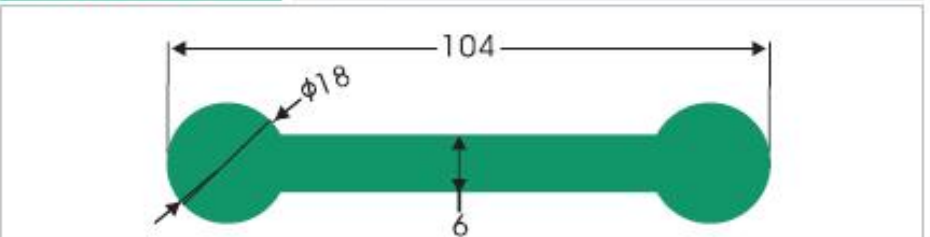
**HDS001****HDS002****HDS003****HDS004****HDS005****HDS006****HDS007****HDS008****HDS009****HDS010****HDS011****HDS012****HDS013****HDS014****HDS015****HDS016****HDS017****HDS018**



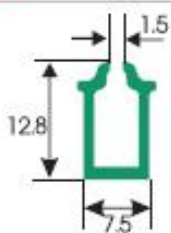
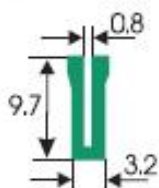
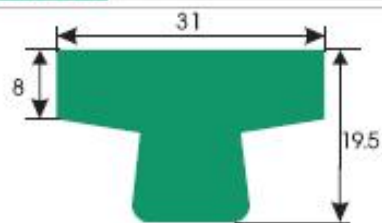
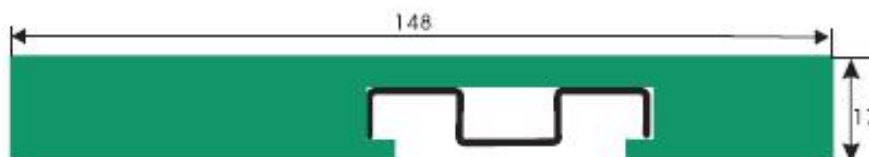
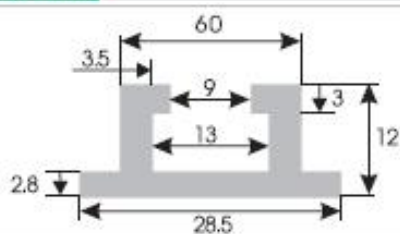
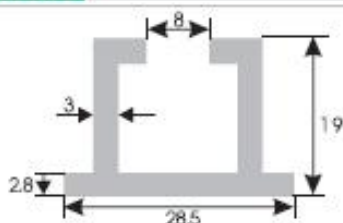
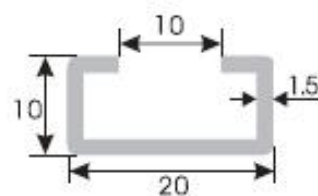
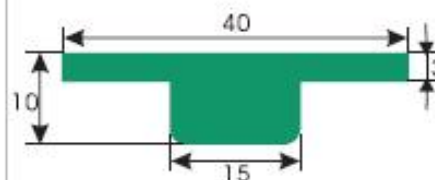
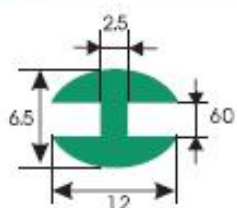
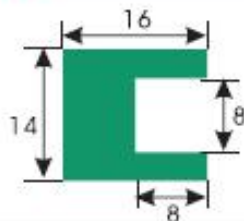
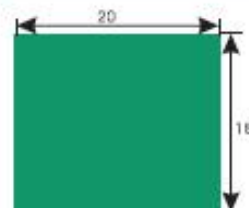
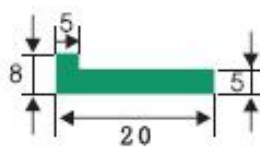
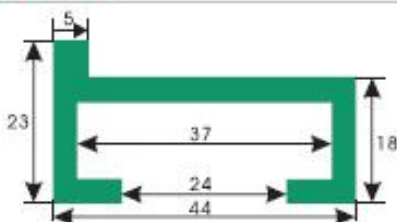
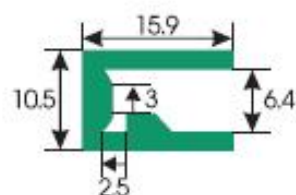
**HDS019****HDS020****HDS021****HDS022****HDS023****HDS024****HDS025****HDS026****HDS027****HDS028****HDS029****HDS030****HDS031****HDS032****HDS033****HDS034**

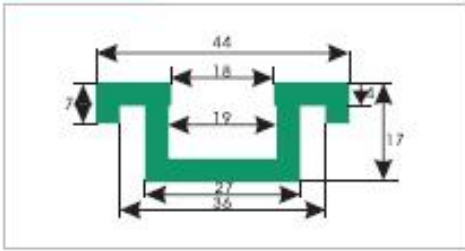
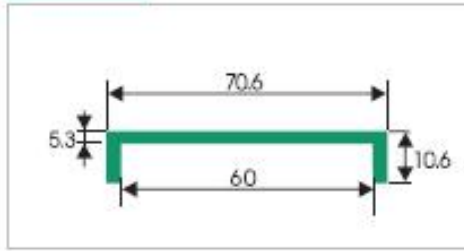
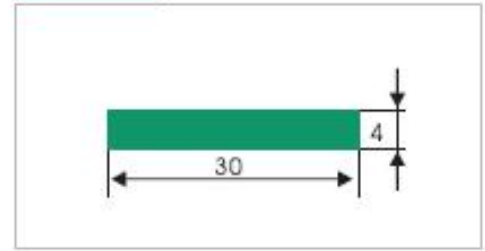
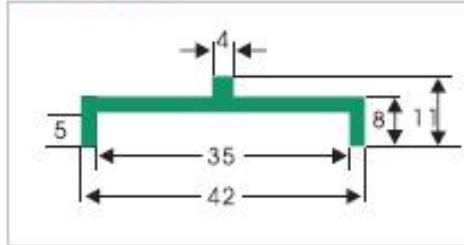
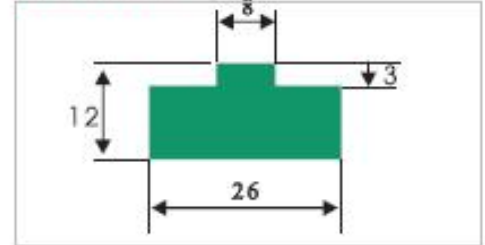
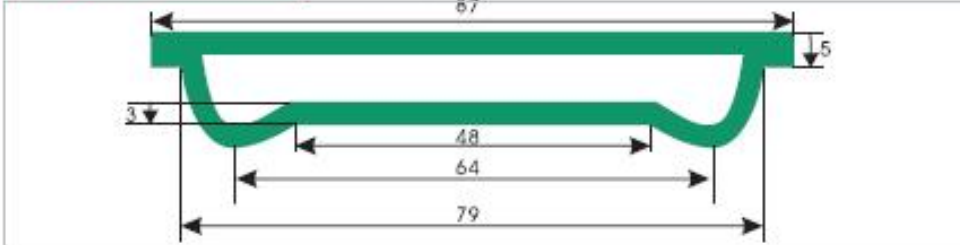
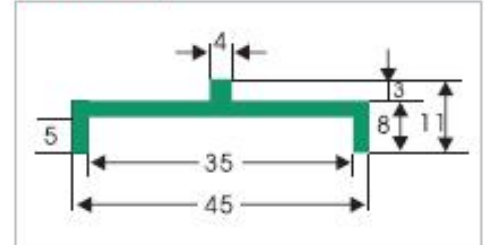
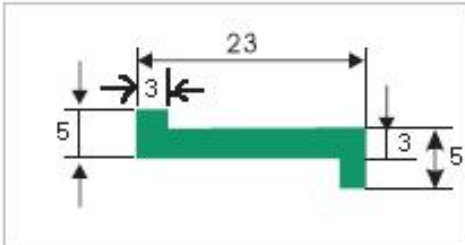
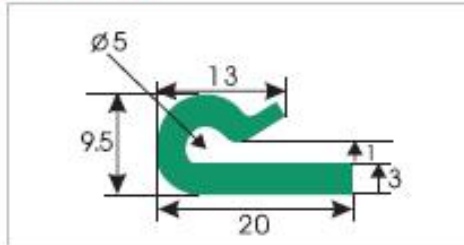
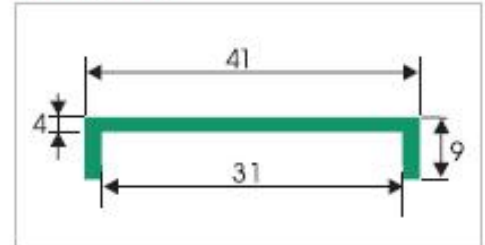
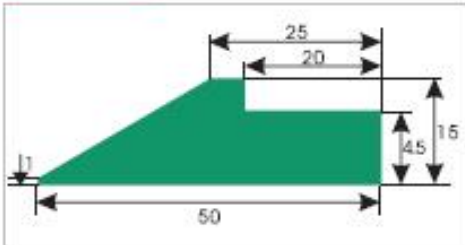
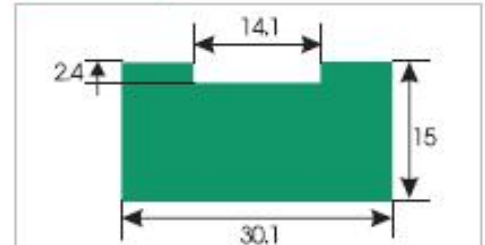
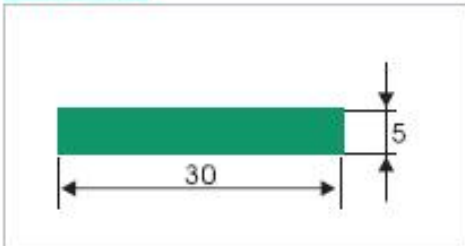
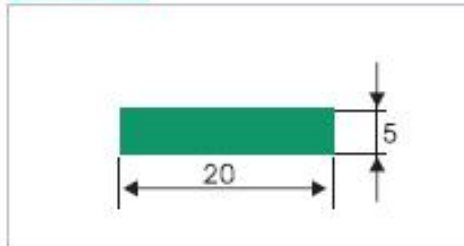
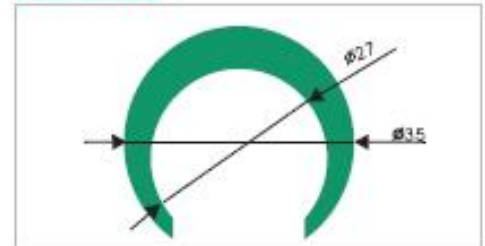
**HDS035****HDS036****HDS039****HDS040****HDS041****HDS042****HDS043****HDS044****HDS045****HDS049****HDS050****HDS051****HDS052****HDS053****HDS054****HDS055****HDS056****HDS057**

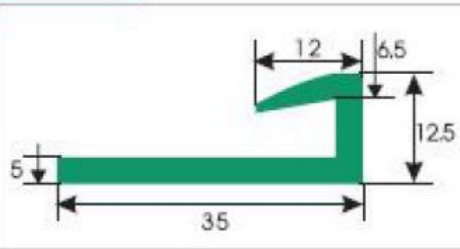
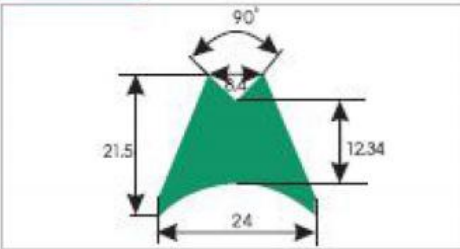
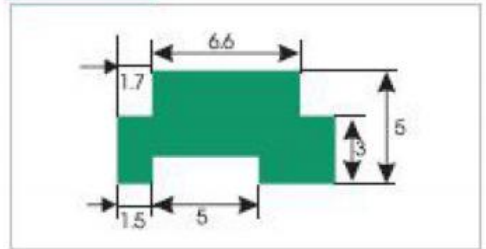
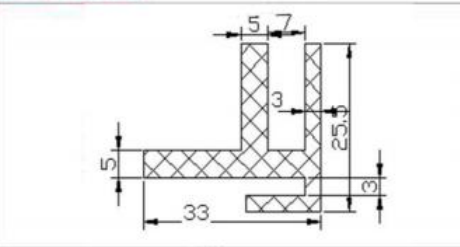
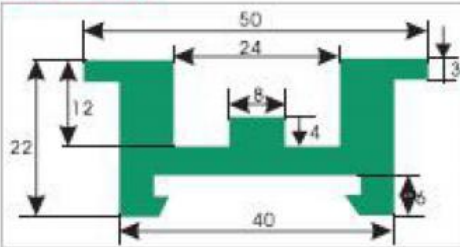
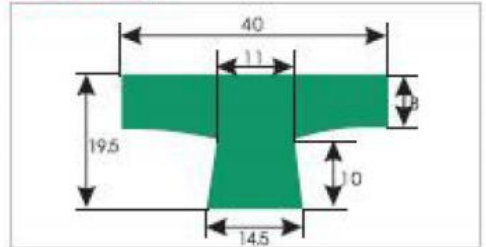
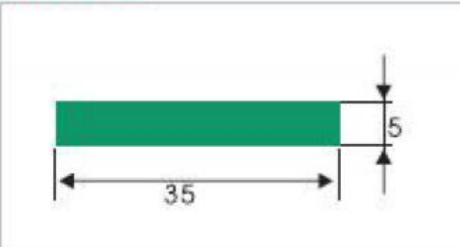
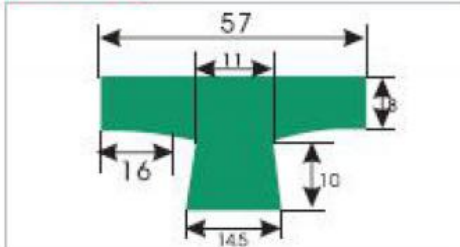
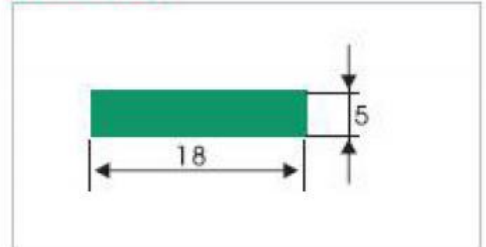
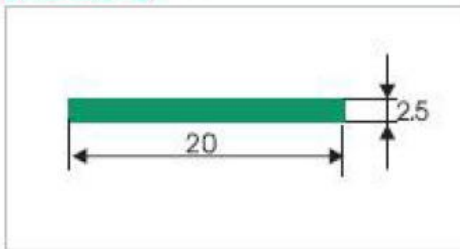
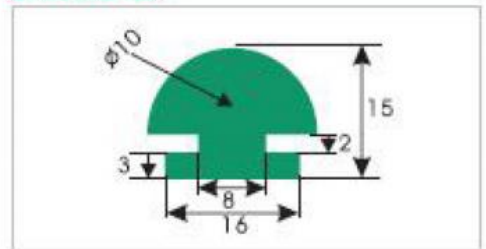
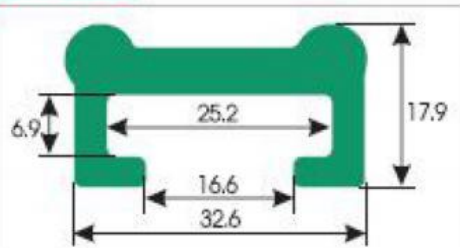
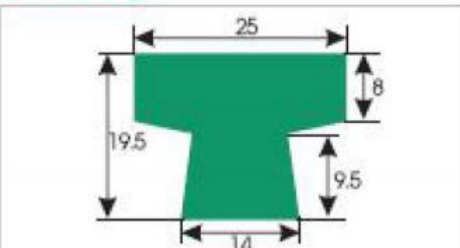
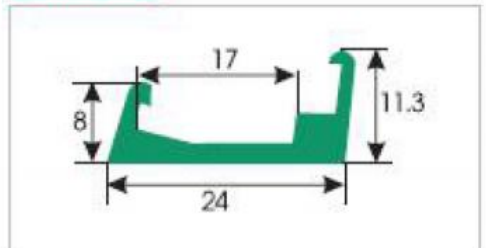
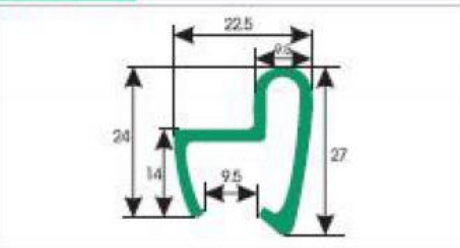
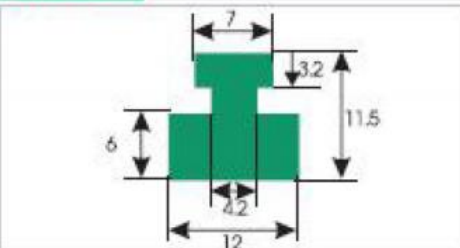
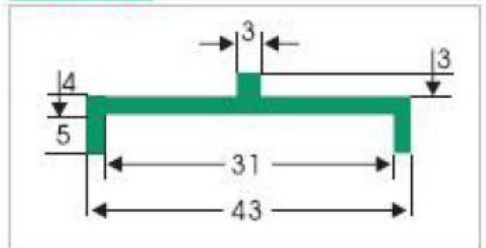
**HDS058****HDS060****HDS061****HDS065****HDS066****HDS067****HDS068****HDS069****HDS070****HDS071****HDS072****HDS073****HDS74****HDS075****HDS076****HDS077****HDS078**

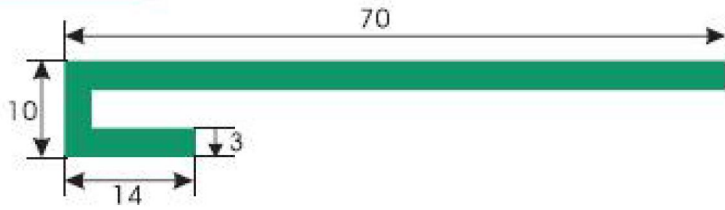
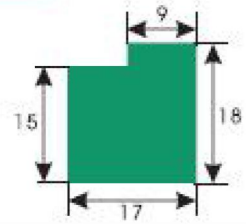
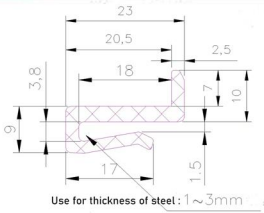
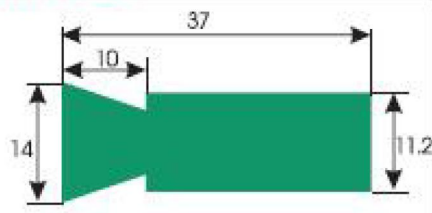
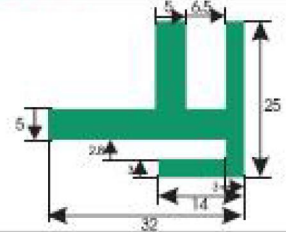
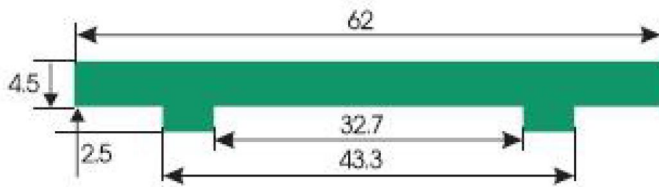
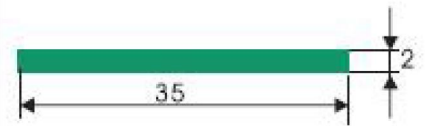
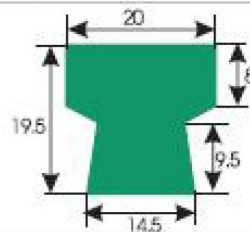
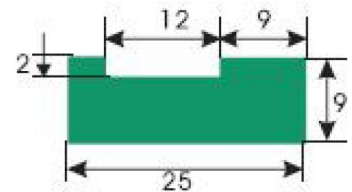
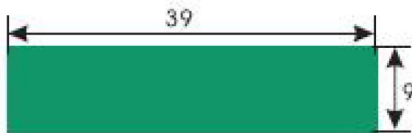
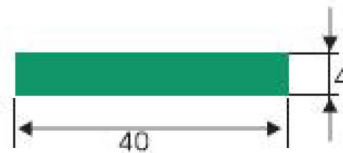
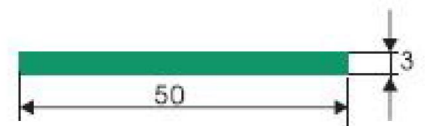
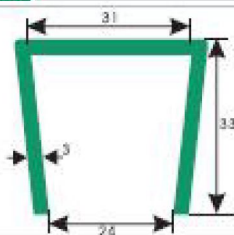
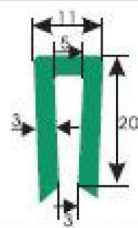
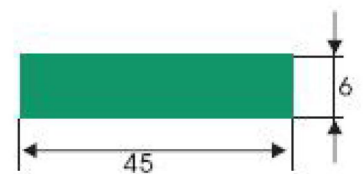
**HDS080****HDS081****HDS082****HDS083****HDS084****HDS085****HDS086****HDS087****HDS088****HDS089****HDS090****HDS091****HDS092****HDS094****HDS095**



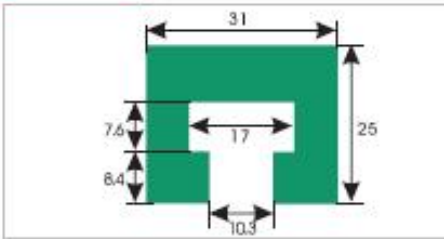
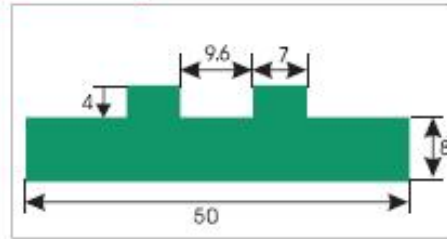
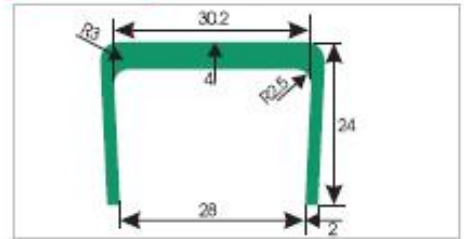
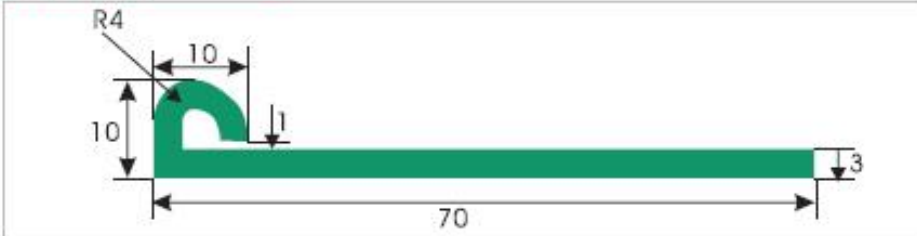
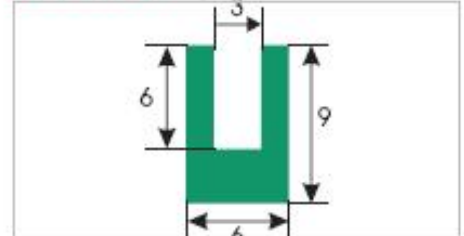
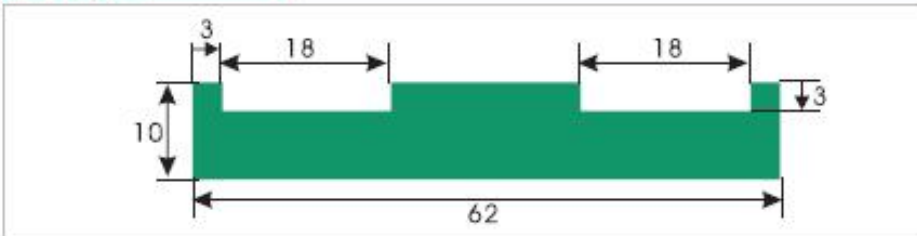
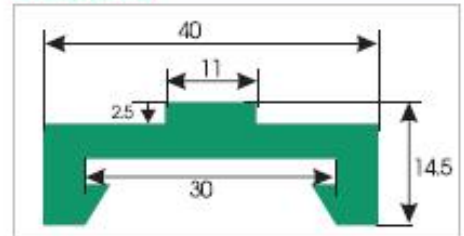
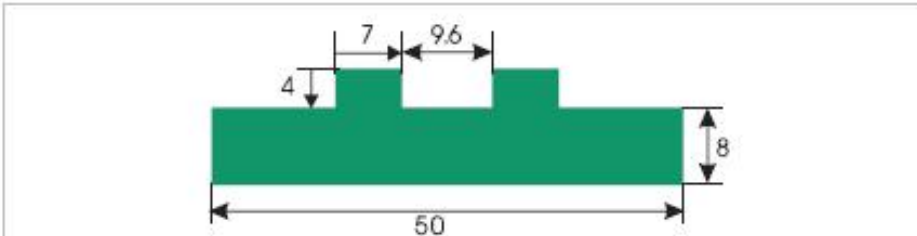
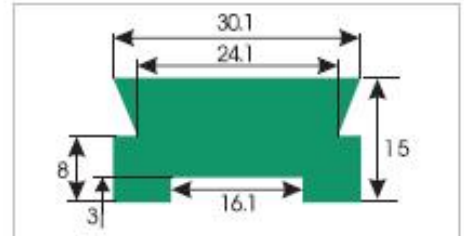
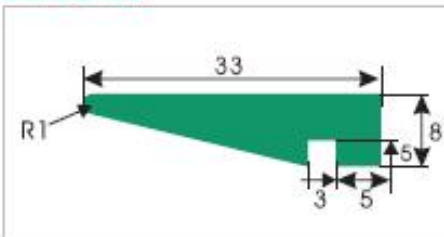
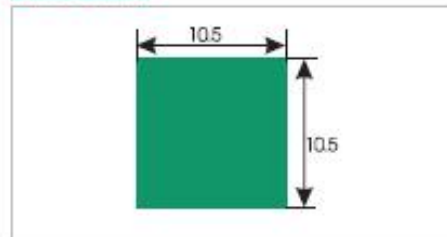
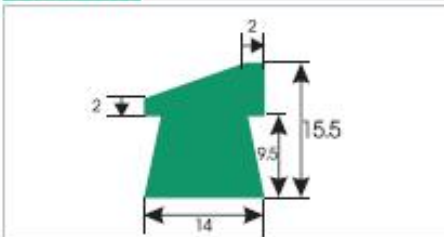
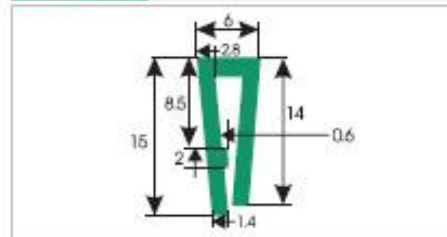
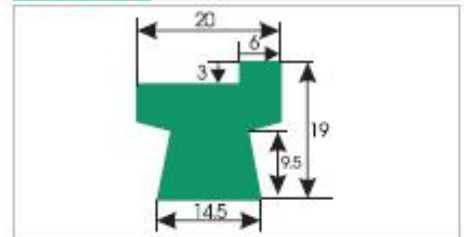
**HDS096****HDS097****HDS098****HDS099****HDS100****HDS101****HDS102****HDS103****HDS400****HDS401****HDS402****HDS403****HDS404****HDS405****HDS406****HDS407****HDS408**

**HDS409****HDS412****HDS413****HDS414****HDS415****HDS417****HDS416****HDS418****HDS419****HDS420****HDS421****HDS422****HDS424****HDS425****HDS426****HDS427**

**HDS428****HDS429****HDS430****HDS431****HDS432****HDS433****HDS434****HDS435****HDS436****HDS437****HDS438****HDS439****HDS440****HDS441****HDS442****HDS443****HDS444****HDS445**

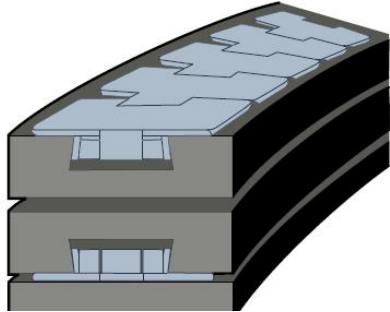
**HDS446****HDS447****HDS448****HDS449****HDS451****HDS450****HDS452****HDS453****HDS454****HDS455****HDS456****HDS458****HDS459****HDS460****HDS461****HDS462**



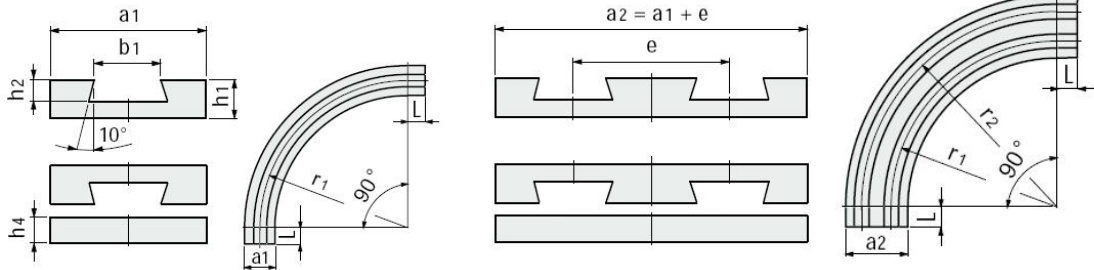
**HDS463****HDS457****HDS465****HDS464****HDS467****HDS466****HDS468****HDS469****HDS470****HDS471****HDS472****HDS473****HDS474****HDS475****HDS476**

**Corner tracks and straight tracks for TableTop® Series:**

- 881
- 8811
- 880

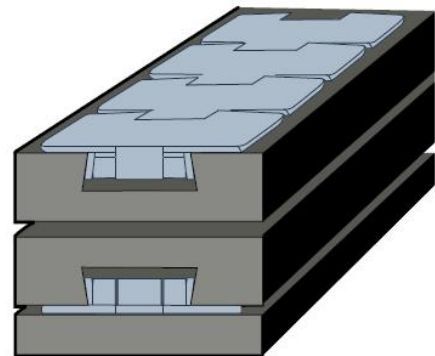


**■ Corner tracks**

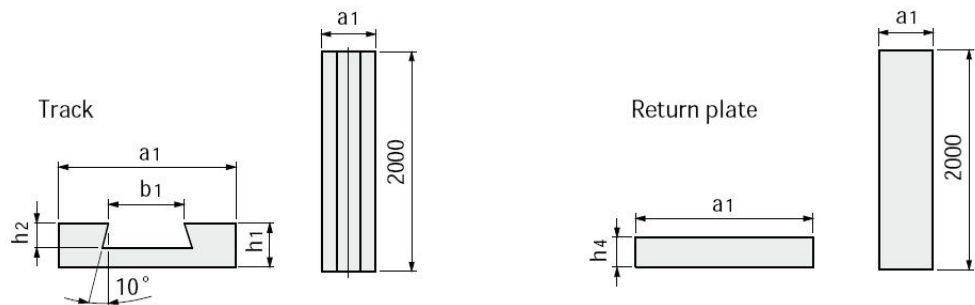


Type of Chain	Chain width mm	Radius r1 mm	State of supply	Width ±0.5					L mm	Pitch e mm
				a1 mm	b1 mm	h1 mm	h2 mm	h4 mm		
880-k325	82.5	500	Without the L sections	100	41.4	25	18	16	-	90
881-k325			With the L sections	100	41.4	25	17	15	50	*
8811-k325										
880-k450	114.3	610	Without the L sections	125	41.4	25	18	16	-	120
881-k450			With the L sections	130	41.4	25	17	15	20	*
8811-k450										
881-k750	190.5	610	Without the L sections	200	41.4	25	18	16	-	195
8811-k750			With the L sections	210	41.4	25	17	15	50	*

\* = To be specified upon order.



**■ Straight tracks**



Type of Chain	Chain width mm	Width				
		a1 mm	b1 mm	h1 mm	h2 mm	h4 mm
880-k325	82.5	100	41.4	25	17	15
881-k325						
8811-k325						
880-k450	114.3	130	41.4	25	17	15
881-k450						
8811-k450						

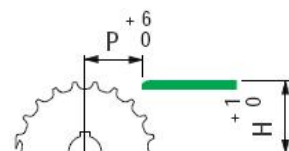
■ Material: polyethylene UHMWPE (black) with molecular density 1.000.000.

■ Linear expansion coefficient : 2 x 10<sup>-4</sup>

■ Special dimensions on application.

■ Standard packaging: the corner tracks are supplied complete with carry and return sections. Straight tracks are applied as single profile 2 m long.

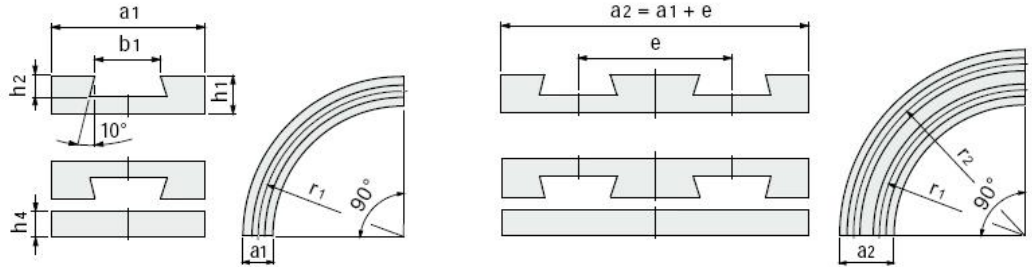
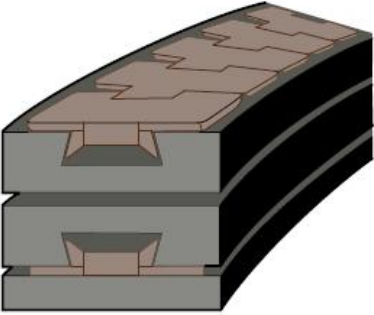
■ Operating temperature :  
In air (-40 to + 80 ° C).  
In hot water (+ 70 ° C).



**Corner tracks for TableTop®**  
 Series:  
 • 882



■ **Corner tracks**



Type of Chain	Chain width	Radius	Width	±0.5				Pitch
		r1	a1	b1	h1	h2	h4	e
	mm	mm	mm	mm	mm	mm	mm	mm
882-k450	114.3	610	125	58	27	21	16	120
882-k750	190.5	610	200	58	27	21	16	195
882-k1000	254	610	265	58	27	21	16	260

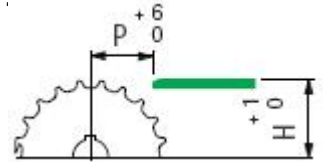
■ **Material:** polyethylene UHMWPE (black) with molecular density 1.000.000.

■ **Standard packaging:** the corner tracks are supplied complete with carry and return sections.

■ **Special dimensions on application.**

■ **Linear expansion coefficient :**  $2 \times 10^{-4}$

■ **Operating temperature :**  
 In air (-40 to + 80 ° C).  
 In hot water (+ 70 ° C)

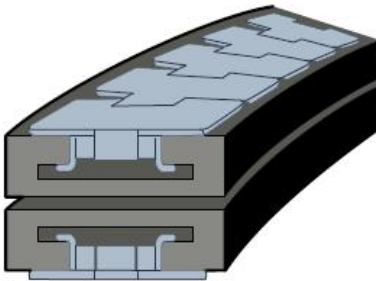


**Corner tracks and straight tracks for TableTop® Series:**

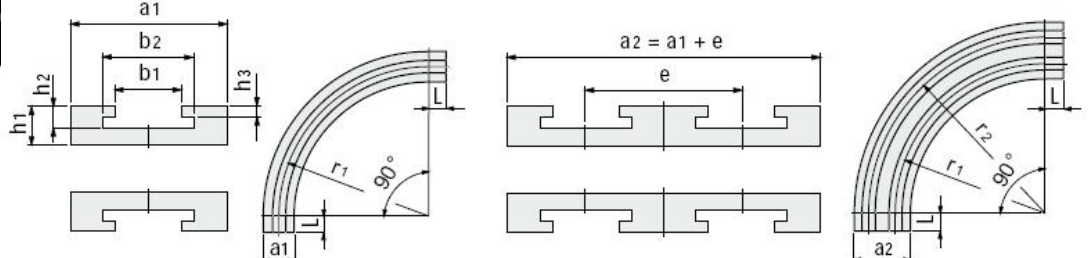
- 8811 TAB
- 880 TAB



- Suitable also with chains type:
- SSC 8811 TAB Rubber Top
  - 880 TAB-K454
  - HFP 880 TAB
  - 880 BO
  - HFP 880 BOT

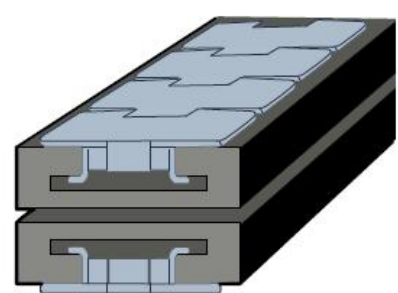


■ **Corner tracks**

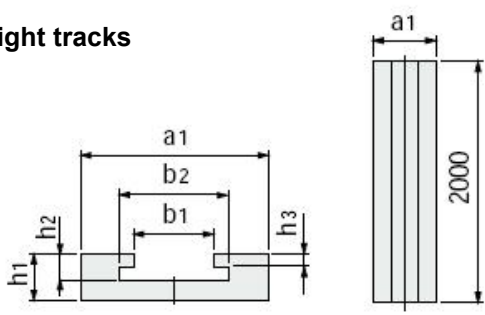


Type of Chain	Chain width mm	Radius r1 mm	State of supply	Width ±0.5			h1	h2	h3	L	Pitch e
				a1 mm	b1 mm	b2 mm					
880TAB-k325 8811TAB-k325	82.5	500	Without the L sections	100	45	70	25	18	9.5	-	90
			With the L sections	100	45	67	25	18	10.5	50	*
880TAB-k450 880TAB-K454 8811TAB-k450	114.3	610	Without the L sections	125	45	70	25	18	9.5	-	120
			With the L sections	130	45	67	25	18	10.5	50	*
8811TAB-k750	190.5	610	Without the L sections	200	45	70	25	18	9.5	-	195
			With the L sections	210	45	67	25	18	10.5	50	*

\* = To be specified upon order.



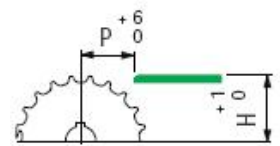
■ **Straight tracks**



Type of Chain	Chain width mm	Width ±0.5			h1	h2	h3
		a1 mm	b1 mm	b2 mm			
880TAB-K325 8811TAB-k325	82.5	100	45	67	25	18	10.5
880TAB-K450 8811TAB-k450	114.3	130	45	67	25	18	10.5

- **Material:** polyethylene UHMWPE (black) with molecular density 1.000.000.
- **Standard packaging:** the corner tracks are supplied complete with carry and return sections. Straight tracks are supplied as single profile 2 m long.
- **Special dimensions on application.**

- **Linear expansion coefficient :**  $2 \times 10^{-4}$
- **Operating temperature :**  
In air (-40 to + 80 ° C ).  
In hot water (+ 70 ° C ).



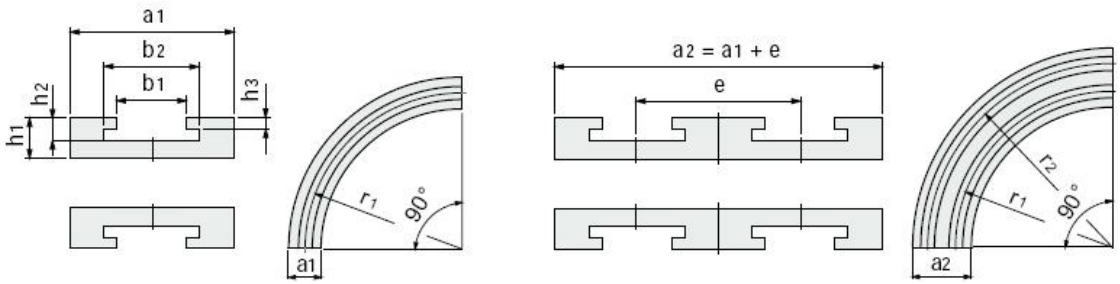
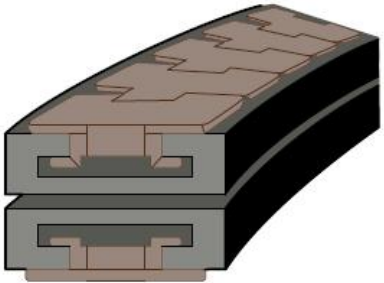


**Corner tracks and straight tracks** for TableTop® Series:  
 • 882 TAB



Suitable also with chains type:  
 - HFP 882 TAB  
 - HFP 882 TAB F  
 - RR 882

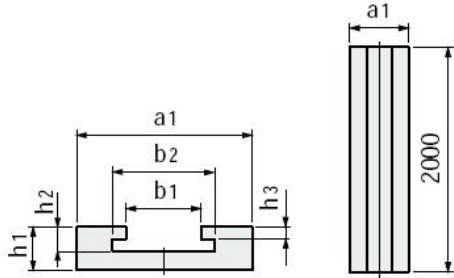
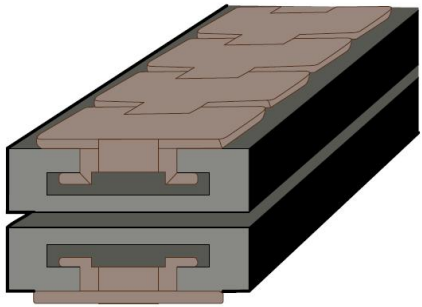
■ **Corner tracks**



Type of Chain	Chain width	Radius	Width			h1	h2	h3	Pitch
		r1	a1	b1	b2				e
		mm	mm	mm	mm				mm
882TAB-K450	114.3	610	130	60	84	30	24	15	*
882TAB-K750	190.5	610	210	60	84	30	24	15	*
882TAB-K1000	254	610	270	60	84	30	24	15	*
882TAB-K1200	304.8	610	320	60	84	30	24	15	*

\* = To be specified upon order.

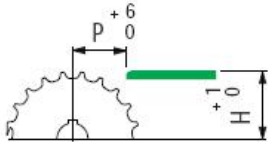
■ **Straight tracks**



Type of Chain	Chain width	Width			h1	h2	h3
		a1	b1	b2			
		mm	mm	mm			
882TAB-K450	114.3	130	60	84	30	24	15
882TAB-K750	190.5	210	60	84	30	24	15
882TAB-K1000	254	270	60	84	30	24	15
882TAB-K1200	304.8	320	60	84	30	24	15

- **Material:** polyethylene UHMWPE (black) with molecular density 1.000.000.
- **Standard packaging:** the corner tracks are supplied complete with carry and return sections. Straight tracks are supplied as single profile 2 m long.
- **Special dimensions** on application.

- **Linear expansion coefficient :**  $2 \times 10^{-4}$
- **Operating temperature :**  
 In air (-40 to +80 ° C ).  
 In hot water (+70 ° C ).





## **Dongguan Hanjun Plastic Product Co.,Ltd**

**Attn:Fiona guo**

**Tel:+86 0769-83287582**

**Mobile: +86-188 2550 3509**

**Fax: +86-0769-83287582**

**Skype:+86-188 2550 3509**

**WhatsApp/WeChat:+86-+86-188 2550 3509**

**E-mail: Fionaguo@dghanjun.com**

**Alibaba Website [www.dghanjun.en.alibaba.com](http://www.dghanjun.en.alibaba.com)**

**Website: [www.dghanjun.com](http://www.dghanjun.com)**

**Add:No.18, Fuxi Six Lane, Liaobu Town, Dongguan City, Guangdong Province, China**

**Postcode:523402**